

23 November 2020



## Flu Vaccination Uptake

Once again the team have excelled themselves committing to the flu vaccination programme. This time we have been delivering flu in the Health Centre and at Age UK's site in Kiln Farm.

The Kiln Farm location has enabled us to deliver clinics with our PCN colleagues meaning we have been able to offer many more appointments, on a much wider variety of days and times and, more importantly, social distanced.

Data submitted nationally is current up to week 46 (week ending 14 November). At this point patient uptake is as follows:

	Eligible Patients	No. Vaccinated	% Uptake	Target %	Refused/ Declined Vaccine
65 & Over	2,752	2,195	79.8 %	75	118
At Risk	1,163	474	40.8 %	75	11
Pregnant	28	14	50 %	75	2
2 year olds	101	63	62.4 %	75	0
3 year olds	86	51	59.3 %	75	4

If you fall into any of the existing groups eligible for your flu vaccine and you have not yet had it please contact the practice and book an appointment as soon as possible.

## Flu Vaccination for the 50-64's

From 1 December, for the first time ever, we will be permitted to start offering vaccines to the 50-64 year olds on the NHS.

We are happy to report that, despite national issues sourcing additional flu vaccines, we have taken delivery of supplies for our 50-64 year olds.

In total we will be offering the vaccination to around 1,500 additional qualifying patients. Clearly we won't be able to offer you all an appointment immediately however over the next few weeks we will be contacting our 50-64 year olds to book appointments.



Our aim is to vaccinate this additional group of patients by the end of January i.e.: before the flu season typically fully kicks in. Having to staff a COVID vaccination programme may impact our flu delivery programme however we will endeavour to keep you updated.

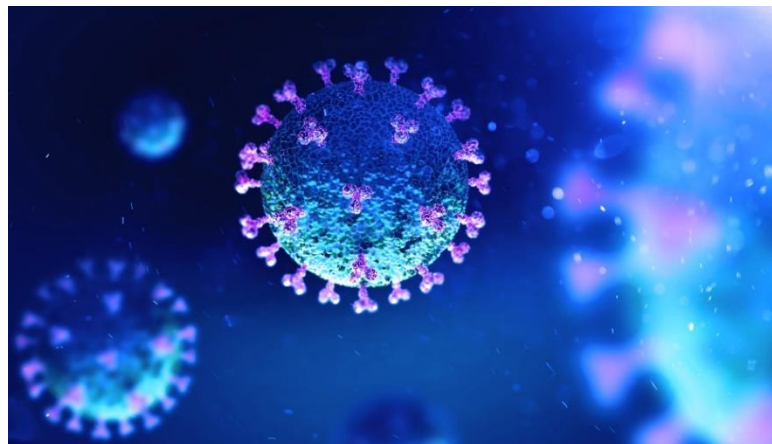
To continue with ensuring social distancing i.e.: keeping you, other patients and the practice team safe you are likely to be asked to travel to either Kiln Farm or Whitehouse Park Health Centre for your vaccination but be assured both sites have ample parking.

---

## COVID Vaccine

As I am sure you will have seen on the news it is hoped that some sort of COVID vax could be available as early as the middle of December.

The government has already started to make it very clear that any vaccine will be given on a priority basis after a risk assessment. Broadly speaking health care workers and the over 80's will go first and then we will work through the age ranges and the registers of patients who are considered to be at greater risk e.g.: those with diabetes, COPD etc.



Please be assured that as soon as we can invite you to a clinic we will do so but please also be aware that it will be weeks, indeed it could be some months after the first vaccine is available before we are able to offer a vaccine to the younger, generally well patients.

It is likely that many of the immunisations will be delivered at one of two large centres in MK. Fortunately one centre highlighted as suitable is close to Stony Stratford which should be convenient for our patients however more news about dates and locations will follow in due course.

In the meantime please

- **Keep washing your hands**



- **Wear a face covering**



- **And keep your distance**

